

Q333.909911

STATE LIBRARY OF NSW

28 JUN 2017

MITCHELL LIBRARY
LEGAL DEPOSIT COPY

BULLETIN 6 | August 2016



BEECROFT CHELTENHAM CIVIC TRUST INC

President Kent Ross
Email president@2119.org.au

Secretary Lesley Snelgrove
Email secretary@2119.org.au

Address PO Box 31, Beecroft NSW 2119
Website www.2119.org.au
ABN 41 449 599 554

DEVLINS CREEK POLLUTION



Photo: Michael Bianchino

The Poly Horizon development at Cambridge St, Epping has been fined \$14,000 by Parramatta Council for water pollution and failing to comply with development conditions. Local resident Michael Bianchino discovered the pollution in Devlins creek following the substantial June rain event and immediately notified the EPA and Parramatta Council.

Upon investigation it was discovered that the development was pumping waste water straight into the stormwater drain. Whilst the rain event was a once in a hundred year event, procedures to protect the environment are part of the development conditions for

these construction sites. The Trust commends Parramatta Council for taking immediate action to penalise the developer to ensure this type of pollution doesn't happen again.

The Trust points out that the Beecroft Place development in Hannah St Beecroft used proper filtering equipment onsite to extract this pollution from the waste water, before it entered the stormwater system.

If you notice pollution from the construction sites in our community, we encourage you to contact the relevant council and EPA. You might recall the dead eels in Devlins Creek recently - so we all need to keep an eye open.

Powerful Owls About

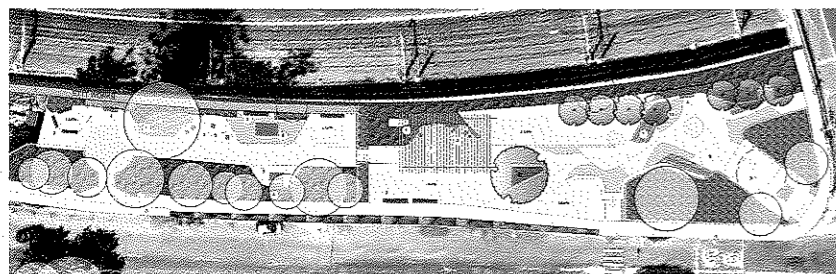
Now is the time Powerful Owls are likely to be out and about finding partners, snuggling and smooching in preparation for chicks. If you see a Powerful Owl, the Powerful Owl Project is keen to hear from you as they are keeping records of sightings. Sadly, it is also important to keep records of injured Powerful Owls and those who have died so if you encounter either of these please also let the Project personnel know.

If you do happen to see a Powerful Owl please note where and when, if the owl has prey and / or is doing something unusual and send this to powerfulowl@birdlife.org.au You can also contact Trish through the Trust email trish@2119.org.au as I am happy to help if I can.

Below is the web address for the Powerful Owl Project if you would like further information. birdlife.org.au/projects/powerful-owl-project



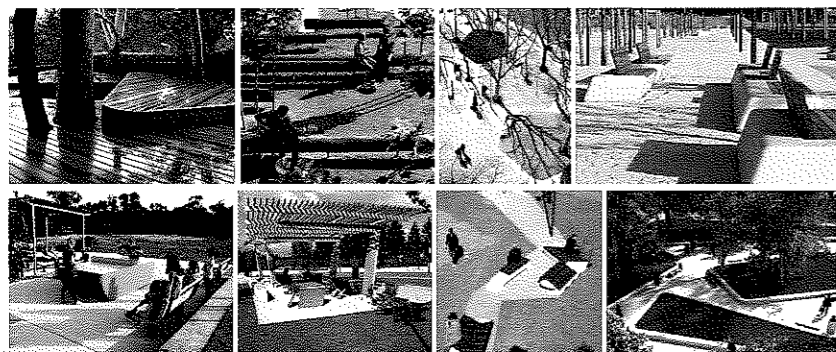
Draft Plans for Beecroft Village Gardens and Community Centre Carpark



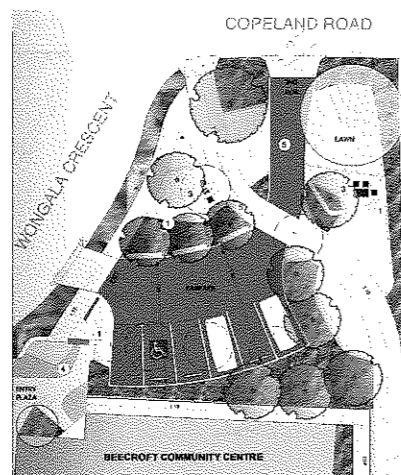
HAVE YOUR SAY

Hornsby Council is seeking resident opinion on the Draft Plan for the Beecroft Village Gardens and Community Centre Carpark. The plans are on exhibition now. The closing date is currently listed as Sunday 14 August. Go to www.hornsby.nsw.gov.au/haveyoursaybeecroft

Here's what they want it to look like:



The Trust considers this project, located in the heart of our village, will have a significant and permanent impact on the way our local community use our precious open space. The Trust has some serious concerns with elements of the project including the key objectives, traffic management, functionality and funding. As a consequence the Trust will be requesting an urgent meeting between the Trust committee and relevant council officers with the intention of holding a public meeting so the community can be better informed. We believe meeting individually with a council officer in the shopping centre is not conducive to a meaningful



discussion over key issues. The Trust has requested an extension of the exhibition period to allow further community consultation.

Train Noise and vibration

2119 residents have long complained about the noise and vibration from freight trains in the area. With the new track opening recently, the movement of freight trains has significantly increased. The Trust has learnt that even if your home was not considered for remediation measures to reduce noise and vibrations in the first round under the Freight Noise Attenuation Program, there remains an opportunity to have your property assessed for further consideration. Measures include the double glazing of windows of affected properties.

Transport for NSW hired acoustic engineers to predict noise and vibration impacts of the new track, but now that it is open for business, they are prepared to accept some of these assessments may not have been correct. When you consider that the initial application of remediation seemed sporadic at best, this may be the chance some residents have been waiting for to get a better nights sleep. Visit freight.transport.nsw.gov.au/documents/fnap-policy.pdf for more information.



Movements of freight trains in the area have increased with the opening of the third track

Byles Creek Valley Update

The Land and Environment Court (LEC) decision for 79-87 Malton Rd Beecroft has been finalised and is now on the web for LEC Judgements.

Go to www.caselaw.nsw.gov.au and search for 'malton' and look for Henlong Property Group.

It would seem the Asset Protection Zone required for bushfire protection in perpetuity, still goes from Malton Rd to the northern side of the Right of Way which is an unformed extension of the road where the LEC Conciliation was held. This will still mean a loss of much vegetation but the Community's efforts have most certainly once again, saved a larger chunk of bushland than was originally planned.

It is unclear from the published Judgement where the boundary

is for Lot 6. This will be in Council's hands and conserved as Open Space. We have been led to believe it has once again been increased to approximately one hectare. Council's solicitor has stated this has happened in no small way, as a result of Community pressure and the constant emails and letters of concern sent in by residents and friends of Byles Creek Valley.

The DA for the neighbouring land at 77 Malton Rd (approximately 7000 sq metres) has also been approved. Unfortunately, 77 trees will be lost for bushfire protection and construction. The owners are prepared to work with Council to come to an agreement over the walking track along Byles Creek and in the meantime have kindly stated they are happy for the public to still utilise this part

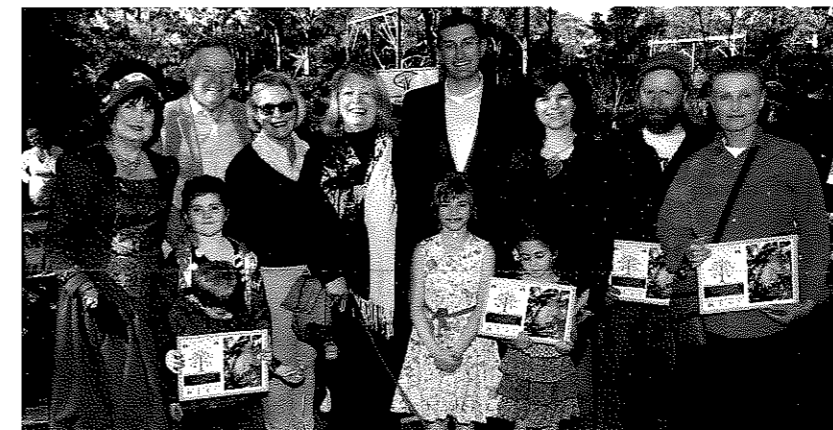
of the track for access to Byles Creek Valley and the Lane Cove National Park.

We have a very caring Community which obviously greatly values its bushland and the creatures who rely on it for survival. Thanks to all who have shown how much they value conservation of our environment for our future generations.

Letterbox Mystery Solved

Thanks to all members of the community who brought the recent disappearance of several of our post boxes to our attention. We are happy to report they have now all been replaced with shiny new ones.

National Tree Day Picnic



The 1st birthday of the Beecroft Patron tree, the White Mahogany planted in the Village Green, was celebrated on Sunday 31st July at our National Tree Day picnic.

We were delighted that so many locals joined us for tea and cake to celebrate the occasion. We can report the tree is doing very well and now we've planted a second sapling. If you are passing the Green, please check

on its progress. If you see any disease or problems please let the Trust know.



Events Section

Annual Spring Walk

When: Sunday 18 Sep, 2pm to 4pm
Where:

Starting and finishing at the end of Welham Street, Beecroft. The walk will not be strenuous. A hat and sensible shoes are recommended. Afternoon tea will be provided at the scout hall at the end of the walk. No booking necessary, just turn up.

Trust Movie Night

When: Saturday 26 Nov at 5:15 pm.
Where: Beecroft Community Hall
Come and enjoy a community film night showing a Christmas movie for the kids. To book go to www.trybooking.com/220045

MEET THE LOCALS



Eva (Evangelii) Pendaki-Barichard is the owner/operator of the Hannah Street Beecroft florist, La Vie en Rose. Eva has been a presence in our community since 2012, where she and her experienced florists offer floral expertise, passion, a wide knowledge of flowers and plants and above all – amazing customer service. In order to

get behind the “face” of La Vie en Rose, we asked Eva the following questions: •

Why did you choose to open your shop in the Village?

I was looking for a year to find a shop that answered my pre-requisites:

- A shop with a street window
- Surrounded by Community facilities (schools, doctors, clubs, variety of shops, churches) in a leafy environment... and I found it all in Beecroft!

What do you like about the Beecroft/Cheltenham area?

The people first! I found in the Community a sense of co-operation rather than competition. The members of this Community take you to an elevated space with their optimism and their demand for quality.

What do you think about the changes the area has undergone?

In the name of progress we can

gracefully accept it, but it is a challenge to safeguard the qualities of a Village Community. I hope that Beecroft and Cheltenham will go through a face lift without losing the precious community feeling.

What might our readers be surprised to learn about you?

The ability of the human being to adapt with the change of circumstances in life. I started as a fashion designer working in London and Greece, was a Health Care Interpreter with the Department of Health in Australia, then I turned to floristry after my marriage in France. I regret nothing about any of these changes as it has provided a wealth of experience and knowledge.

What do you do in your spare time?

I read to learn about our wonderful world that we are so lucky to be part of.

New Options in Skin Solutions

Tucked away in Beecroft Village, Skin by Sarah Hudson is your private destination for beautiful skin.

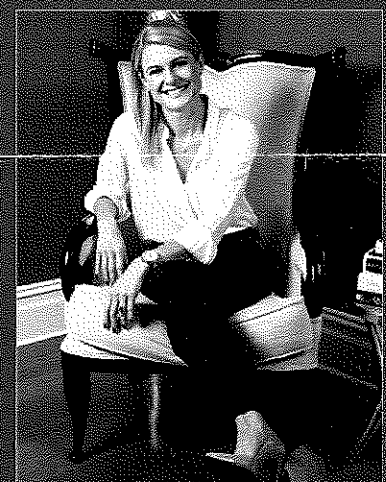
Sarah is a 20-year veteran aesthetic practitioner, skin educator, consultant to plastic surgeons, qualified dermal therapist, and member of the Australian Society of Dermal Clinicians.

Offering Medical Grade Treatments & Clinical Skin Analysis for:

- Lines & Wrinkles ■ Pigmentation & Age Spots
- Loss of Facial Volume ■ Coarse Pores & Skin Texture
- Redness & Broken Capillaries

New to the Clinic:

- Non-surgical Skin Tightening



SKIN BY
SARAH HUDSON
Clinical Skin Solutions

02 9481 7546 | Shop 2/5 Wongala Crescent, Beecroft | www.skinbysarahhudson.com.au